

aIVR20W
aIVR USB Writer
USER GUIDE

Aplus Integrated Circuits, Inc.

www.aplusinc.com.tw

sales@aplusinc.com.tw

Introduction

The aIVRW20 USB Writer is designed to support Aplus' aIVR series Voice chips. The devices that to be supported are:

- **aIVR3K10 (10 sec, 1 IN, 3 I/O OTP chip)**
- **aIVR3K21 (21 sec, 1 IN, 3 I/O OTP chip)**
- **aIVR3K42 (42 sec, 1 IN, 7 I/O OTP chip)**
- **aIVR1004 (10 sec, 4 I/O OTP chip)**
- **aIVR2104 (21 sec, 4 I/O OTP chip)**
- **aIVR4208 (42 sec, 8 I/O OTP chip)**
- **aIVR8511 (85 sec, 11 I/O OTP chip)**
- **aIVR341N (341 sec, 15 I/O OTP chip)**

This USB writer serves three main functions:

Blank Check – to check the aIVR chip whether is blank chip.

Program – to program the DAT file into the aIVR chip .

Verify– to verify the DAT file into the aIVR chip.

Please refer to the documents of the individual software.

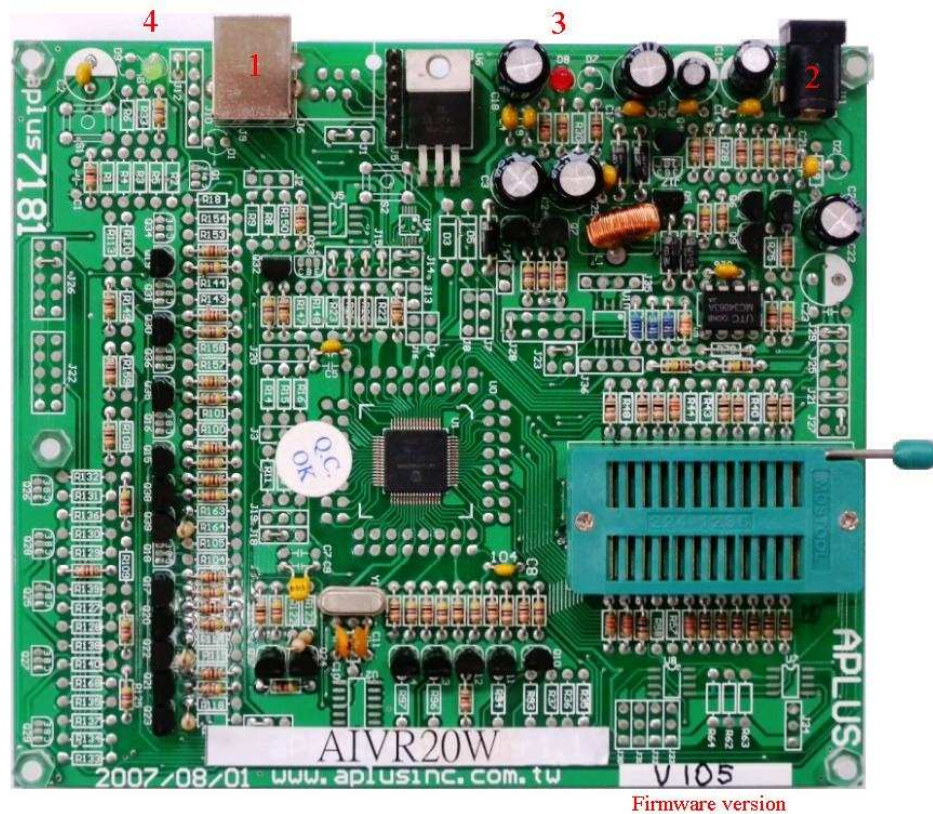
Installation

Hardware Installation

aIVR20W is a USB based writer programmer. It is intended to be used in Windows XP computer.

Writer Board Connection

- 1) Connect USB cable from the writer board to the computer. The computer will display a new hardware is found message. The installation will begin automatically.
- 2) If there are too many USB devices are connected to your computer at the same time, the current supply from USB may not be sufficient to support the writer board.



- Legend :**
1. Connect to the computer's USB port
 2. Or use a +6V DC power supply
 3. The power LED will be turned ON
 4. BUSY LED

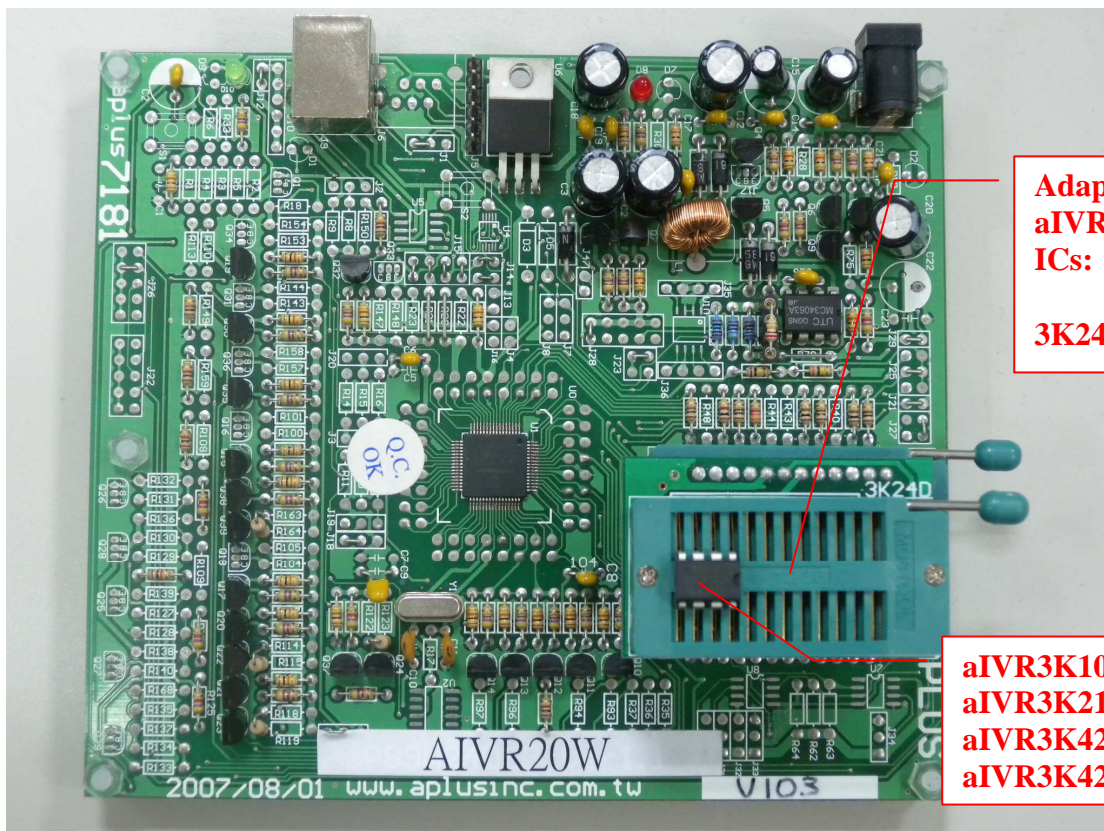
Fig. 1 The aIVR3KWS Writer Programmer Board

Inserting Devices onto the Programmer

- DIP package devices
- Device should be inserted align to the bottom of the 24-pin textool socket.



**aIVR1004 - 16DIP
aIVR2104 - 16DIP
aIVR4208 - 16DIP
aIVR8511 - 20DIP
aIVR341N - 20DIP
aIVR341N - 24DIP**

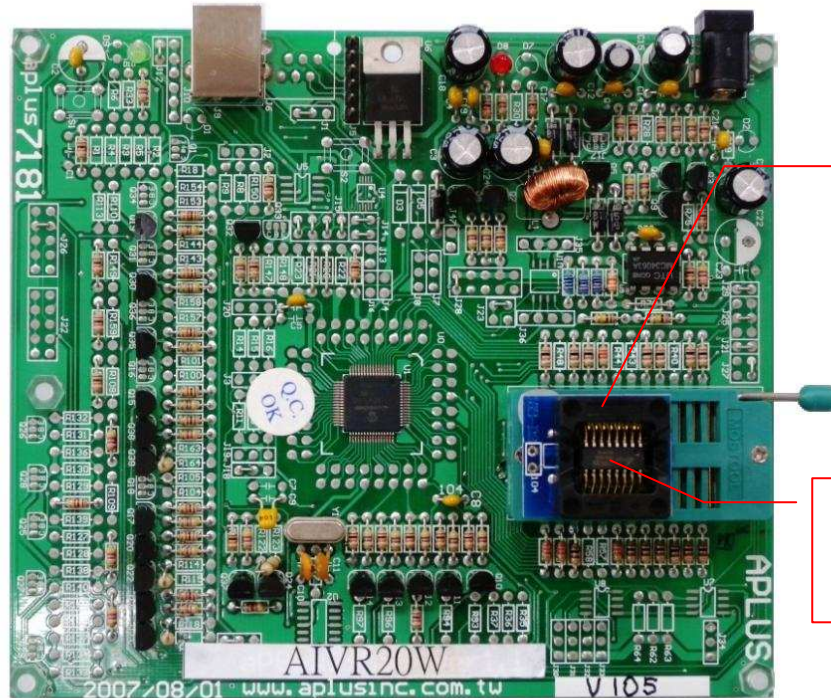


**Adapter for
aIVR3K DIP
ICs:
3K24DT**

**aIVR3K10 - 8DIP
aIVR3K21 - 8DIP
aIVR3K42 - 8DIP
aIVR3K42 - 14DIP**

aIVR20W – aIVR Series USB Writer User Guide

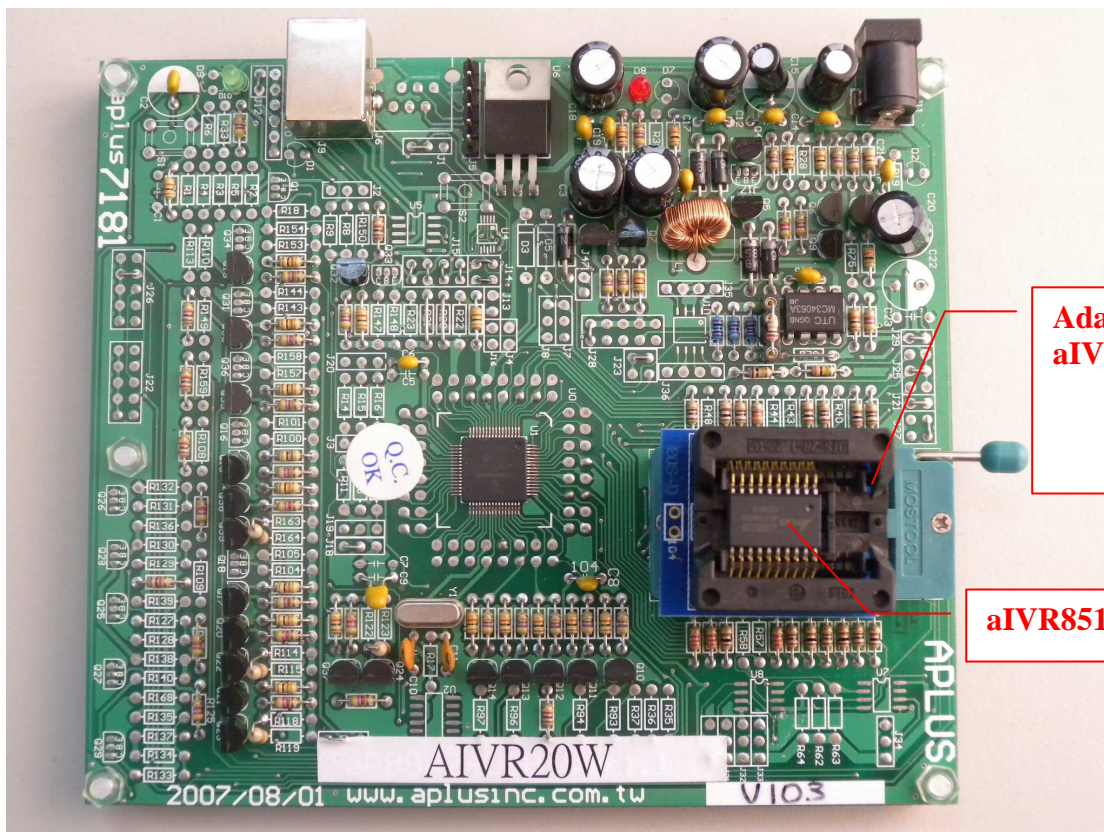
- SOP Package
- Additional SOP adapter should be used and align to bottom of the 24-pin textool socket.



**Adapter for
aIVR1004/2104
/4208 SOP:**

16S-D2

**aIVR1004 - 16SOP
aIVR2104 - 16SOP
aIVR4208 - 16SOP**



**Adapter for
aIVR8511 SOP :**

20S-D

aIVR8511 - 20SOP

